

Pace Arrow

CLASS A GAS



White Pearl



Gold Rush



Shalestone



Platinum



Iron



Driven to Explore

INTERIOR DECORS

Aged Bronze

LIVING/DINING ROOM



Dinette Cushions



Accent Fabric



Ultraleather™ Driver & Front Passenger Seats, Sofa

BEDROOM



Bedspread & Pillow Shams



Accent Fabric

After Midnight

LIVING/DINING ROOM



Dinette Cushions



Accent Fabric



Ultraleather™ Driver & Front Passenger Seats, Sofa

BEDROOM



Bedspread & Pillow Shams



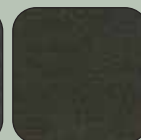
Accent Fabric

Obsidian

LIVING/DINING ROOM



Dinette Cushions



Accent Fabric



Ultraleather™ Driver & Front Passenger Seats, Sofa

BEDROOM



Bedspread & Pillow Shams



Accent Fabric

Wood Finishes



Plantation Cherry



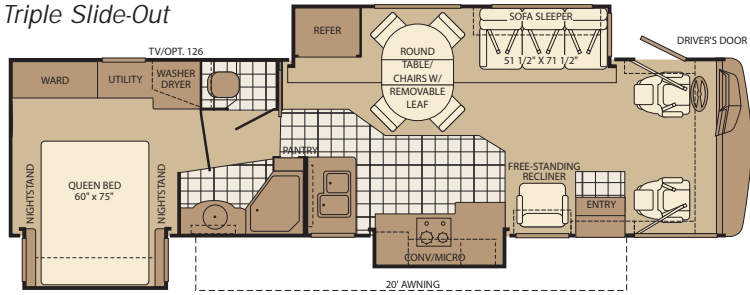
Symphony Cherry



Bijoux Cherry

FLOOR PLANS

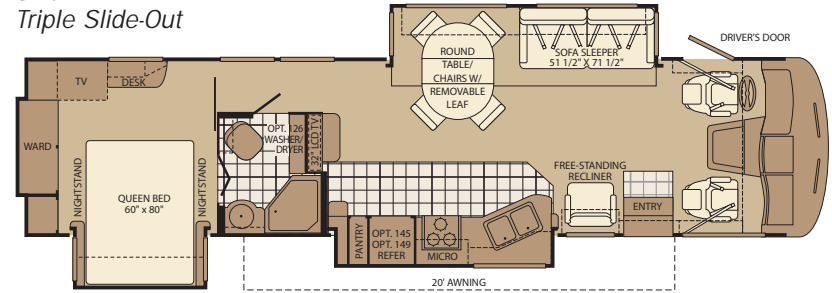
35A
Triple Slide-Out



Interior Storage Capacity: 119 cu. ft.
Exterior Storage Capacity: 167 cu. ft.

Available Options: 126, 833, 834

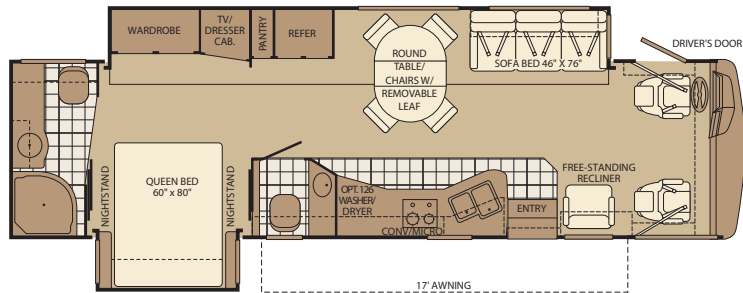
37C
Triple Slide-Out



Interior Storage Capacity: 169 cu. ft.
Exterior Storage Capacity: 125 cu. ft.

Available Options: 126, 145, 149, 491, 833, 834

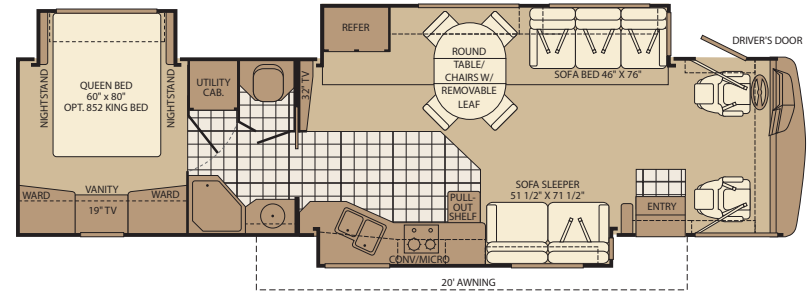
36D
Full-Wall Slide
Double Slide-Out



Interior Storage Capacity: 123 cu. ft.
Exterior Storage Capacity: 127 cu. ft.

Available Options: 126, 807, 833, 834

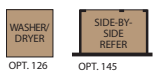
38P
Triple Slide-Out



Interior Storage Capacity: 139 cu. ft.
Exterior Storage Capacity: 175 cu. ft.

Available Options: 632, 833, 834, 852

OPTIONS



OPT. 126



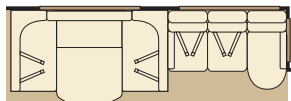
OPT. 145



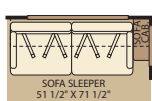
OPT. 149



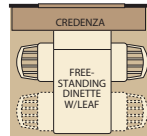
OPT. 491 EURO RECLINER
W/OTTOMAN



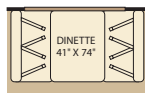
OPT. 632
U-DINETTE W/SOFA



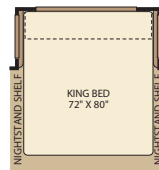
OPT. 807
SOFA SLEEPER



OPT. 833
FREE-STANDING DINETTE
WITH CRENZNA



OPT. 834
DINETTE



OPT. 852
KING BED

Pace Arrow

STANDARD FEATURES

INTERIOR

INTERIOR – THROUGHOUT

- 10 Gallon Quick Recovery Water Heater w/Direct Spark Ignition (Gas/Electric)
- 120V/12V AC/DC Converter Central Electrical Panel
- 20,000/30,000 Btu Dual Furnaces (36D, 37C & 38P)
- 3 Way Water Pump Switch
- 3 Striking Interior Theme Décor
- 5.5kW Onan® Quiet Generator
- 50 Amp Service
- Alder Stained Drawer Fronts & Raised Panel Cabinet Doors, Arched Designs
- Laminate Flooring
- Automotive Wire Harnesses
- Battery Disconnect System
- Brushed Nickel Finish Cabinet Hardware
- Centralized Monitor Panel w/Slide-Out Controls
- Complete TuffPEX Plumbing System
- Décor Lighting
- Deluxe Roller Bearing, Full Extension Drawer Guides & Transit-Ship Locks
- European Style Hidden Cabinet Door Hinges
- Dual 6V/Deep Cycle House Batteries
- Dual Roof A/C High Efficiency w/Solar Panel and Chill Grills
- Engine Cover Convenience Tray
- Nylon Carpet w/Pad
- Fluorescent Ceiling Lights w/Dual Bulbs
- Halogen Lighting
- Solid Divider Doors
- Telephone Jack-In Dash
- Vinyl Ceiling, Cushioned
- Wall Switches
- Water Heater Bypass
- Whole Coach Water Filtration System
- Wood Drawers
- DSS Manual Lift Satellite Dish

DRIVER CONVENIENCE

- 3 Point Seat Belts at Driver & Front Passenger Seats
- AM/FM Radio w/CD Player, Satellite Radio Ready
- Auto A/C Heater Combo
- Auxiliary Start Circuit
- Computer Workstation In-Dash
- Cruise Control
- Dash Fans
- Denso Intermittent Wipers
- Digital Compass & Outside Temperature Gauge
- Double Swivel Sun Visors w/Map Pockets
- Driver's Door w/Power Window Lift
- Driver/Front Passenger Ultraleather™ Captain's Chairs w/Reclining Back/Slide Controls w/Power Driver Seat
- ICC Switch
- Low Profile Engine Cover
- Radio Switch Main/Auxiliary Power
- Tilt Steering Wheel

LIVING ROOM

- 26" Samsung® LCD HDTV in Front Overhead
- Dual Glazed Slider Windows w/Day/Night Shades
- DVD Home Theater Sound System
- Flush Floor Living Room Slide-Out
- Free-Standing Reclining Chair w/Security Bracket
- TV Antenna
- Ultraleather™ Furniture w/Throw Pillows

GALLEY

- 12 cu.ft. Stainless Steel Dometic® Refrigerator w/Ice Maker
- Solid Surface Countertops
- Built-In Galley Cutting/Bread Board (Select Models)
- Coffee Maker
- Free-Standing Dinette Table w/Leaf & Four Chairs (2 Folding Chairs)
- Solid Surface Galley Sink
- Mirrored Galley Backsplashes
- Over the Range Convection Microwave Oven, Stainless w/Built-In Rangehood & Light
- Radius Corner Cabinetry
- Hinged Solid Surface Range Cover
- Single Lever Moen® Galley Faucet w/Pullout Sprayer
- Soap Dispenser
- Solid Wood Dinette Table Tops
- Waste Basket
- Fan-Tastic® Power Roof Vent

BEDROOM

- 19" Samsung® LCD HDTV
- Bedspread w/Deluxe Fabric Headboard
- Rear Speakers
- Restonic® Deluxe Pillow Top Innerspring Mattress
- Second Phone Jack
- Wardrobe Lighting
- Wardrobes w/Mirrored Doors, Cedar Lining & Wire Shelf

BATHROOM

- Beveled Mirror in Lavy (Select Models)
- Brushed Nickel Bath Accessories
- Metal Designer Moen® Lavy Faucet
- Fan-Tastic® Power Roof Vent
- Molded Acrylic Shower
- Large Polished Stainless Steel Lavy Sink
- Porcelain Toilet w/Water Saver
- Shower Dispenser for Lotion, Shampoo, Soap, Etc.
- Single Lever Shower Control, Brushed Nickel, w/Slide Adjustable Shower Head & Soap Dish
- Skylight in Tub/Shower
- Solid Wood Lavy Door
- Toilet Tank San-T-Flush™ System

SAFETY/CONVENIENCE

- 10 ABC Fire Extinguisher
- Carbon Monoxide Detector/Alarm
- Entry Assist Handle
- Propane Detector/Alarm

- Smoke Detector/Alarm
- Child Safety Tether
- Multiple Seat Belt Locations

EXTERIOR

EXTERIOR – THROUGHOUT

- 5 Colorways w/Full-Body Paint
- Accessory Propane Supply w/Hose
- Aluminum Tube Front Grill
- Aluminum Wheels
- Awning Rail/Drip Molding (Both Sides)
- Dual Battery Charge Control
- Dual Chrome Electric Horns
- Dual Patio Receptacles
- Electric Awning
- Fiberglass Front/Rear Caps
- Fiberglass Front Wheel Well Trims
- Flush Mounted Furnace & Water Heater
- Park Cable Receptacle
- Patio Awning
- Utility Compartment w/Exterior Shower
- Wrap Around Euro Design Taillights
- Heated Water & Holding Tank Compartments
- Mud Flaps
- Large, Curved Aerodynamic Windshield

AUTOMOTIVE

- 4 Point Automatic Leveling Jacks
- 5,000 lb. Trailer Hitch w/7 Pin Electrical Hook-Up (6,000 lb. w/W24 Chassis)†

SAFETY/CONVENIENCE

- Large One-Piece Windshield
- Automotive Safety Glass
- Daytime Running Lights
- Double Power Entry Step w/Light
- Dual Halogen Headlights
- Entry Door w/Screen Door & Deadbolt Lock
- Hydraulic 4 Wheel Disk Brakes w/4 Wheel Anti-Lock Brakes
- Large, Heated Remote Rear View Mirrors
- Porch Light (Doorside & Roadside)
- Color Rear Vision Monitor/Camera
- Roof Ladder
- Single Motor Windshield Wipers w/Wet Arm
- Swing-Up Engine Access Door
- Underhood Utility Lights
- Winterizing Pick-Up Tube

STORAGE

- Continuous One-Piece Compartment Bulb Seal
- Gas Lift Strut Supports
- Insulated Aluminum Luggage Doors w/Single Paddle Metal Latches & Stainless Steel Hinges
- Lighted Luggage Compartments
- Rotomolded Polyethylene Luggage Compartments
- Steel Luggage Door Seal Frames

BODY STRUCTURE

- Aluminum Interlocking Floor/Wall/Ceiling Framing
- Basement Floor Configuration
- Power Platform® Construction

- Royal Tuff-Ply Radius Roof w/Ducted A/C
- Vacu-bond® Upper/Lower Floors
- Vacu-bond® Walls w/Smooth, High Gloss Exterior Fiberglass

OPTIONS

INTERIOR

- Auto Locating Satellite Dish
- In Motion Satellite Dish

DRIVER CONVENIENCE

- Sirius Satellite Radio® (6 Month Subscription Included)
- Driver/Passenger Shades w/Power Sun Visor

LIVING ROOM

- Sofa Sleeper (36D)

GALLEY

- 2 Burner Cook Top with Sealed Burners
- Fixed Dinette w/Solid Wood Table & Ultraleather™ High Resiliency Foam Cushions
- Free-Standing Dinette w/Credenza
- Slide-Out Dinette Bins w/Optional Fixed Dinette

BEDROOM

- Washer/Dryer (Select Models)
- Queen Bed Air Mattress
- King Bed Air Mattress (Select Models)

EXTERIOR

EXTERIOR

- Dual A/C w/Heat Pump w/Solar Panel on Front A/C
- Diamond Shield Clear Front Protective Mask
- Exterior Entertainment Center w/Samsung® 19" LCD HDTV and AM/FM Radio w/CD Player

AUTOMOTIVE

- Ford® Chassis w/6.8L Triton V10 Engine
- Workhorse™ Chassis 8.1L Vortec™ V8 Engine W22 or W24
- CSA Package**

FLEETWOOD ADVANTAGES

- Best in Class Styling, Graphics & Décor
- Best in Class Floor Plans, Including Full-Wall Slide & Midships Home Theater
- Best in Class Components & Appliances
- Power Platform® Construction (Fleetwood Exclusive)

** CSA standards may require substitution or deletion to achieve conformance.

FORD® / WORKHORSE™

MODELS	35A	36D	37C	38P
Engine Displacement (Liters)	6.8/8.1	6.8/8.1	6.8/8.1	6.8/8.1
Wheelbase (Inches)	228"	228"	242"	242"
GVWR (lbs) ¹	22,000/24,000	22,000/24,000	24,000	24,000
Front GAWR (lbs) ²	7,500/9,000	7,500/9,000	9,000	9,000
Rear GAWR (lbs) ²	14,500/15,500	14,500/15,500	15,500	15,500
GCWR (lbs) ³	26,000/30,000	26,000/30,000	30,000	30,000
Hitch Rating Weight (lbs) ¹	5,000/6,000	5,000/6,000	6,000	6,000
Tongue Weight (lbs) ¹	500/600	500/600	600	600
Fuel Capacity (gal)	75	75	75	75

DIMENSIONS & CAPACITIES

MODELS	35A	36D	37C	38P
Overall Length ⁴	36' 2"	36' 2"	37' 8"	38' 8"
Overall Height (with A/C)	12' 10"	12' 10"	12' 10"	12' 10"
Overall Width (maximum) ^{5, 6}	102"	102"	102"	102"
Interior Height (maximum)	84"	84"	84"	84"
Interior Width (maximum)	96"	96"	96"	96"
Fresh Water Holding Tank (gal)	80	80	80	80
Grey Water Holding Tank (gal)	58	58	58	58
Black Water Holding Tank (gal)	42	42	42	42
Appliance Propane Tank (gal) (WC) ⁷	25	25	25	25
Water Heater Tank (gal)	10	10	10	10

- GVWR (Gross Vehicle Weight Rating) is the maximum permissible weight of this fully loaded motor home. The GVWR is equal to or greater than the sum of the (UVW) unloaded vehicle weight plus the (OCCC) occupant cargo carrying capacity*.
- GAWR (Gross Axle Weight Rating) is the maximum permissible loaded weight a specific axle is designed to carry.
- GCWR (Gross Combined Weight Rating) is the value specified by the motor home manufacturer as the maximum allowable loaded weight of this motor home with its towed vehicle. Towing and braking capacities may be different. Refer to Fleetwood and chassis manufacturer's manuals for complete information.
- Length measured from front bumper to rear bumper (excludes accessories).
- Excludes safety equipment and awnings.
- Motor homes feature a body-width over 96" which will restrict your access to certain roads. Before purchasing, you should research any state and/or province road laws which may affect your usage.
- Tank manufacturer's listed water capacity (WC). Actual propane capacity is 80% of water listing as required by the safety code.

† The chassis manufacturer recommends the installation of a supplemental brake control system to activate the brakes on the vehicle or trailer you are towing. Hitch receiver ratings expressed are maximum for the hitch receiver installed and may require the purchase of additional equipment that is dependent on the weight of the towed load. Consult with hitch receiver manufacturer for further information.

N/A = not available at time of printing.

* UVW and OCCC are found on the label containing the federal certification tag in each RV.

IMPORTANT — PLEASE READ: Product information, photography and illustrations included in this publication were as accurate as possible at the time of printing. For further product information and changes, please visit our website at www.fleetwoodrv.com or contact your local Fleetwood dealer. Prices, materials, design and specifications are subject to change without notice. All weights, fuel, liquid capacities and dimensions are approximate. Fleetwood has designed its recreational vehicles to provide a variety of uses for its customers. Each vehicle features optimal seating, sleeping, storage and fluid capacities. The user is responsible for selecting the proper combination of loads (i.e. occupants, equipment, fluids, cargo, etc.) to ensure that the vehicle's capacities are not exceeded.

Liquid Weight Reference: Water (gal) = (8.3 lbs/3.8 kgs) Fuel (gal) = (6.1 lbs/2.8 kgs) Propane (gal) = (4.2 lbs/1.9 kgs)

Metric Conversion: Multiply pounds x 0.453 to obtain kilograms. Multiply gallons x 3.785 to obtain liters. Multiply liters x 61 to obtain cubic inches.

CHASSIS

Model: Ford® / Workhorse™
 Engine: 6.8L Triton V10/8.1L Vortec™ V8
 Transmission: Ford®, 5-Speed Automatic w/Overdrive
 Workhorse™, 6-Speed Automatic w/Overdrive

Alternator: 130 Amp/145 Amp
 Torque: 457 lb-ft @ 3250 RPM/455 lb-ft @ 3200 RPM
 Horsepower: 362HP/340HP