



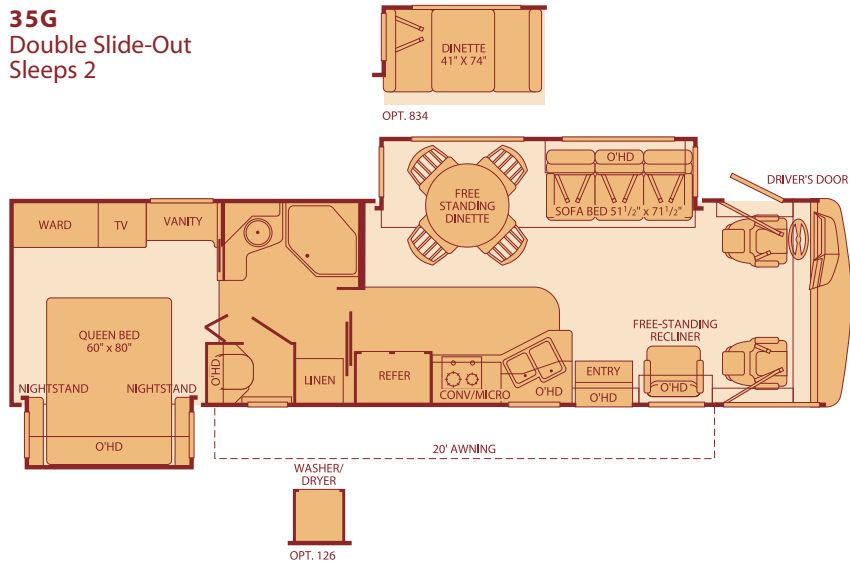
{Pace Arrow}

PACE ARROW Class A Gas 2005

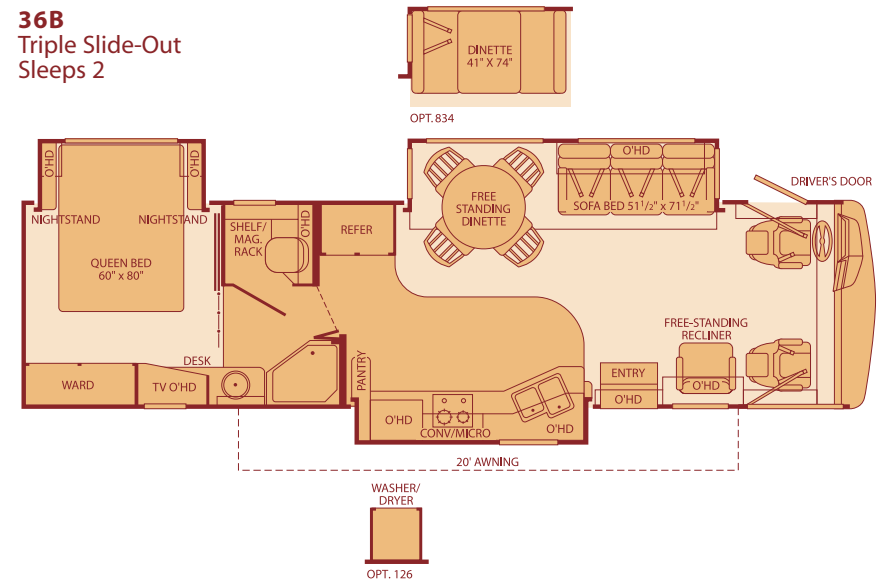


Floor Plans

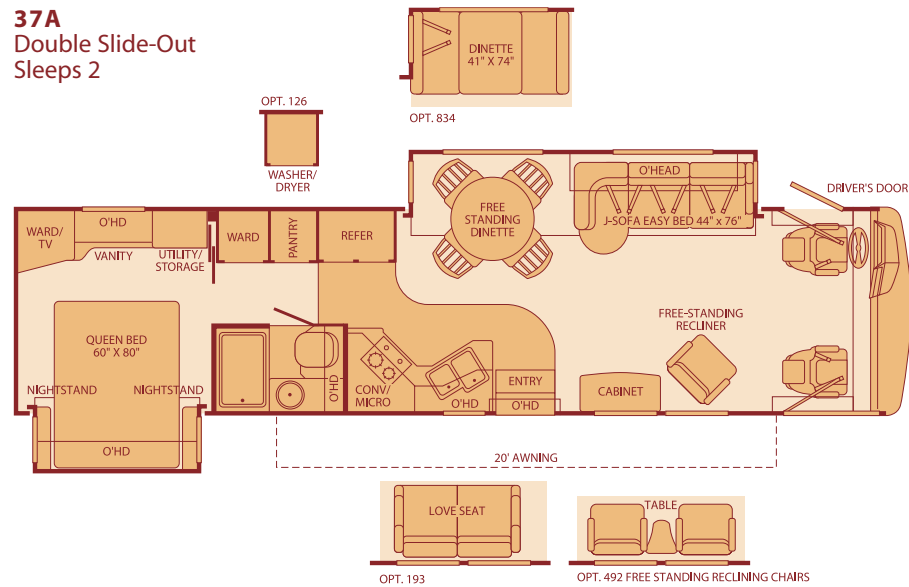
35G Double Slide-Out Sleeps 2



36B Triple Slide-Out Sleeps 2

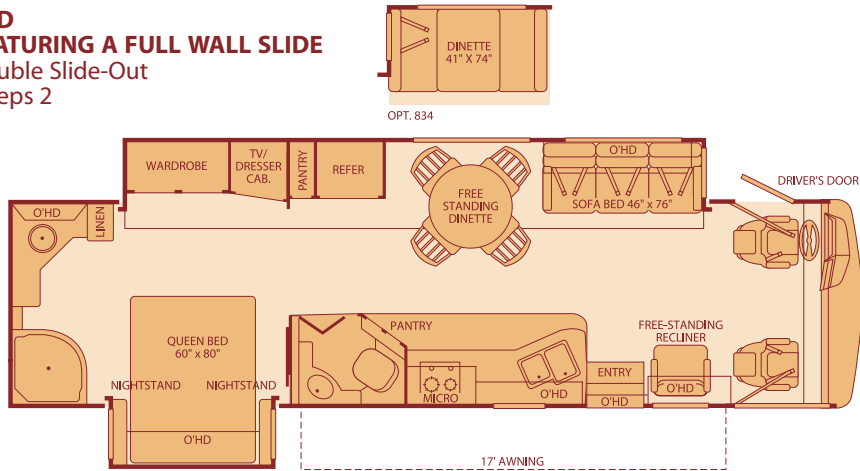


37A Double Slide-Out Sleeps 2

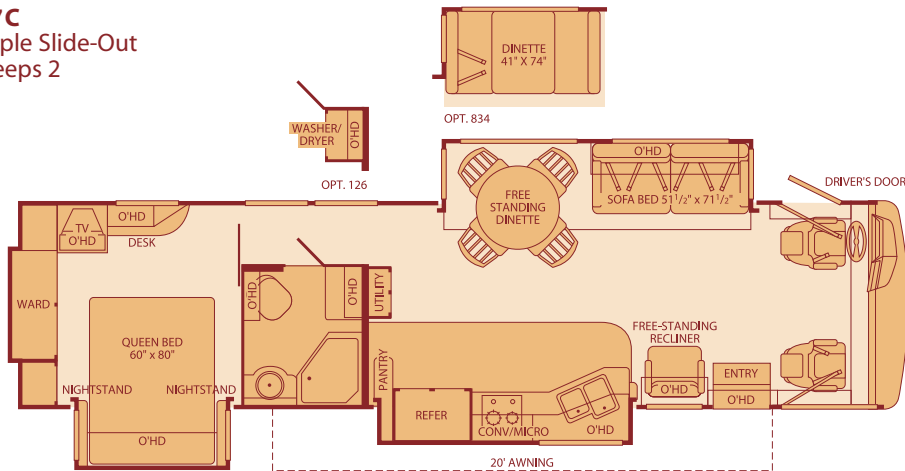


Seatbelt configuration may vary depending on options chosen.
Sleeping capacity based on standard layout. Optional furniture may increase or decrease sleeping capacity.

36D
FEATURING A FULL WALL SLIDE
 Double Slide-Out
 Sleeps 2



37C
 Triple Slide-Out
 Sleeps 2



Setting the Standard in Motor Home Quality.

Fleetwood® prototypes are exposed to thousands of miles of durability testing. Those components that don't survive are redesigned until they do. This sets our standard in safety and durability.

Fleetwood's Tuff-Ply roofing technology is one of the most durable roofing materials on the market and also resists radiation by reflecting sunlight (reduces chalking). White roof material minimizes heat build-up, keeping the temperature cool and comfortable.

Reliable TuffPEX® plumbing runs throughout each vehicle creating a durable seal on all internal tubing. TuffPEX® assures water flow and functions in the coldest of temperatures. The TuffPEX® system is an industry leader in quality plumbing.

For each outer wall, Fleetwood uses one seamless, solid piece of its exclusive Tuff-Coat® fiberglass composite. It resists UV rays, cracks and impacts. Our products look newer longer and that's a big plus at resale time.

To assure a strong, weather-resistant structure, Fleetwood Vacu-bonds® all sidewalls, floors and ceilings to a durable aluminum or steel frame. The Vacu-bond® process is unmatched by many competitors.

Fleetwood's patented Power Platform supports the body with a rigid frame that reinforces the chassis to make it even stronger. This allows Fleetwood to offer triple slide-outs.

Fleetwood sinks and shelves are designed to handle full-size kitchenware. Few competitors can say the same.

Standard Features

Interior

THROUGHOUT

- **Whole Coach Water Filtration System***
- **Deluxe Ball Bearing, Full Extension Drawer Guides***
- **Alder-Stained Drawer Fronts & Raised Panel Cabinet Doors, Arched Designs, Glass Inserts in Select Locations***
- Vinyl Ceiling, Cushioned
- Fabrica® Nylon Carpet w/Pad
- Armstrong® Solarian® Vinyl Floor Covering
- 4 Striking Interior Theme Decors
- Water Heater Bypass System
- 50-amp Service

DRIVER CONVENIENCE

- **Driver/Passenger Ultraleather Captain's Chairs w/ Reclining Back/Slide Controls w/Power Driver Seat***
- **Dual Media Radio w/AM/FM/ Cassette/CD/MX Electronic Tuning***
- Radio Switch-Main/Auxiliary Power

LIVING ROOM

- **Dual Roof A/C High Efficiency w/Solar Panel & Chill Grilles***
- **Panasonic® 5-Disc DVD Home Theater Sound System***
- **Panasonic® 27" Flat Screen TV in Front Overhead***

GALLEY

- **Large Double Stainless Steel Galley Sink***
- **12 cu. ft. Stainless Steel Dometic® Refrigerator w/Ice Maker***
- Freestanding Dinette Table w/Four Chairs
- Slide-Out Dinette Bins w/Optional Fixed Dinette
- 2-Burner Cooktop w/Sealed Burners

BEDROOM

- **Panasonic® 20" Flat Screen TV***
- **Restonic® Deluxe Pillow Top Innerspring Mattress***

BATHROOM

- **Single Level Shower Control, Nickel Finish, w/Slide Adjustable Shower Head & Soap Dish***
- **Shower Dispenser for Lotion, Shampoo, Soap, Etc.***

- Automotive Wire Harnesses
- 5.5kW Onan® Quiet Generator
- 10-Gallon, Quick-Recovery Water Heater w/Direct Spark Ignition (Gas/Electric)
- Centralized Monitor Panel w/Slide-Out Controls
- Battery Disconnects
- 120V/12V AC/DC Converter Central Electrical Panel
- Dual 6V/Deep-Cycle House Batteries
- 3-Way Water Pump Switch
- Wall Switches
- Engine Cover Convenience Tray

- DSS Manual Lift Satellite Dish
- 3-Point Front Seat Belts
- Digital Compass & Outside Temperature Gauge
- Denso Intermittent Wiper Controls
- ICC Switch
- Double-Swivel Sun Visors w/Map Pockets

- Hi-Fi VCR
- TV Antenna
- Flush Floor Living Room Slide-Out
- Ultraleather Furniture w/Throw Pillows

- Solid Wood Dinette Table Tops
- Sharp® Convection Microwave Oven, Stainless w/Built-in Rangehood & Light
- Coffeemaker
- Fan-Tastic® Power Roof Vent
- Single-Lever Galley Faucet w/Pull Out Spray
- Solid Surface Countertops
- Soap Dispenser

- Bedspread w/Deluxe Fabric Headboard
- Wardrobe Lighting
- Rear Speakers

- Porcelain Toilet w/Water-Saver
- Toilet Tank San-T-Flush™ System
- Skylight in Tub/Shower
- Molded Acrylic Shower
- Beveled Mirror in Lavy

- Wood Drawers
- Solid Divider Doors
- Brushed Chrome Finish Cabinet Hardware
- Telephone Jack in Dash, Dinette & Bedroom
- Fluorescent Ceiling Lights w/Dual Bulbs
- Decor Lighting
- Incandescent Lighting
- LPG Detector/Alarm
- Smoke Detector/Alarm
- CO Detector/Alarm
- 10 ABC Fire Extinguisher

- Driver's Door w/Power Window Lift
- Cruise Control
- Low Profile Engine Cover
- Tilt Steering Wheel
- Dash Fans
- Computer Workstation, Dash
- Auxiliary Start Circuit

- Freestanding Reclining Chair w/Security Bracket
- Dual Glazed Slider Windows w/Day/Night Shades
- Entry Assist Handle

- Wine Cabinet (37A Only)
- Built-In Galley Cutting/Bread Board (Select Models)
- Ironing Board Conveniently Slides into Galley, Stores Under Bed (Select Models)
- Trash Receptacle Under Sink
- Mirrored Galley Backsplashes
- Radius Corner Cabinetry

- Wardrobes w/Mirrored Doors, Cedar Lining & Wire Shelf

- Fan-Tastic® Power Roof Vent
- Nickel Finish Bath Accessories
- Nickel Finish Metal Designer Lavy Faucet
- Solid Wood Lavy Door

Exterior

THROUGHOUT

- **Awning Rail/Drip Molding (Both Sides)***
- **Utility Compartment w/Exterior Shower***
- 3 Graphic Colorways to Match Decor
- Fiberglass Front/Rear Caps
- Molded Front/Rear Wheel Well Trims

AUTOMOTIVE

- **4-Point Automatic Leveler System***

SAFETY/CONVENIENCE

- **Rear Vision Camera w/One-Way Audio***
- Large, Heated Remote Rear View Mirrors
- Roof Ladder
- Tilt Steering Wheel

STORAGE

- **Molded Polyethylene Storage Compartments***
- Lighted Compartments

BODY STRUCTURE

- **Vacu-bond® Upper/Lower Floors***
- **Vacu-bond® Walls w/Smooth, High-Gloss Exterior Fiberglass***
- **Royal Tuff-Ply Roof***
- Steel Surface on Bulkhead
- Basement Floor Configuration

- Aluminum Tube Front Grille
- Ultimate Sewer Hose
- Dual Battery Charge Control
- Park Cable Receptacle
- Accessory LP Gas Supply w/Hose**
- Heated Water & Holding Tank Compartments
- Large, Curved Aerodynamic Windshield

- 5,000 lb. Trailer Hitch w/7-Point Electrical Hook-Up† (6,000 lb. w/W24 Chassis)

- Swing-Up Engine Access Door
- Double Power Entry Step w/Light
- Entry Door w/Deadbolt Latch
- Porch Light
- Underhood Utility Light

- Insulated Aluminum Skin Luggage Doors
- Single Paddle/Latches

- **Royal Tuff-Ply Roof***
- Steel Surface on Bulkhead
- Basement Floor Configuration

- Dual Chrome Electric Horns
- Coach Vibration Isolators
- Stainless Steel Wheel Simulators
- Mud Flaps
- Wrap-Around Euro Design Taillights
- Dual Patio Receptacles
- Patio Awning
- Flush Mounted Furnace & Water Heater

† The chassis manufacturer recommends the installation of a supplemental brake control system to activate the brakes on the vehicle or trailer you are towing.

- Dual Halogen Headlights
- Single Motor Windshield Wipers w/Wet Arm

- One-Piece Compartment Bulb Seal
- Gas Strut Door Supports
- Steel Sealed Frames

- Aluminum Interlocking Floor/Wall/Ceiling Framing

Options

DRIVER CONVENIENCE

- Driver/Passenger Shades w/Electronic Sun Visor
- King Dome Auto Locating Satellite Dish
- In-Dash CD 6 Satellite Radio

BEDROOM

- Washer/Dryer

GALLEY

- Fixed Dinette w/Solid Wood Table & Ultraleather, High Resiliency Foam Cushions

AUTOMOTIVE

- CSA Package-Workhorse™
- Workhorse™ Chassis 8.1L Vortec V8 Engine-W22 or W24

EXTERIOR

- 6 Colorways w/Full Body Paint
- A/C w/Heat Pump w/Solar
- Electric Awning (35G, 36D & 37A)

Fleetwood Exclusives

• *The Full Wall Slide is Fleetwood's Patent Pending Structural Design and Exclusively Uses PowerGear's Slide System Technology. Validated in Extensive Durability Laboratory and Track Testing to Ensure High Reliability and Quality**

- **Vacu-Bond® Walls w/Smooth High-Gloss Exterior Tuff-Coat® Fiberglass***
- **Vacu-bond® Floor***
- **Tuff-Ply UV-Resistant Heat/Cold Insulated Roofing Technology***

- **Power Platform***
- **Complete TuffPEX® Plumbing System***

* Denotes Fleetwood's Key Features

** CSA standards may require substitution or deletion to achieve conformance

Weights and Measurements

WORKHORSE™ CHASSIS	35G	36B	36D	37A	37C
Engine Displacement (Liters)	8.1	8.1	8.1	8.1	8.1
Wheelbase (Inches)	228	228	228	242	242
GVWR (lbs)¹ (W22/W24)	22,000/N/A	22,000/24,000	22,000/24,000	22,000/24,000	22,000/24,000
Front GAWR (lbs)² (W22/W24)	8,000/N/A	8,000/9,000	8,000/9,000	8,000/9,000	8,000/9,000
Rear GAWR (lbs)² (W22/W24)	14,500/N/A	14,500/15,500	14,500/15,500	14,500/15,500	14,500/15,500
Base Weight (lbs)³ (W22/W24)	18,600/N/A	19,100/19,200	19,100/19,200	18,600/18,700	19,500/19,600
GCWR (lbs)⁴ (W22/W24)	26,000/N/A	26,000/30,000	26,000/30,000	26,000/30,000	26,000/30,000
Hitch Rating Weight (lbs)⁵ (W22/W24)	5,000/N/A	5,000/6,000	5,000/6,000	5,000/6,000	5,000/6,000
Tongue Weight (lbs)⁶ (W22/W24)	500/N/A	500/600	500/600	500/600	500/600
Fuel Capacity (gal)	75	75	75	75	75

DIMENSIONS AND CAPACITIES

Overall Length⁵	35' 8"	36' 2"	36' 2"	37' 8"	37' 8"
Overall Height (with A/C)[†]	12' 10"	12' 10"	12' 10"	12' 10"	12' 10"
Overall Width (maximum)⁶	102"	102"	102"	102"	102"
Interior Height (maximum)	84"	84"	84"	84"	84"
Interior Width (maximum)	96"	96"	96"	96"	96"
Fresh Water Holding Tank (gal)	80	80	80	80	80
Grey Water Holding Tank (gal)	58	58	58	58	58
Black Water Holding Tank (gal)	47	42	42	42	42
Appliance LPG Tank (gal) (WC)⁷	25	25	25	25	25
Water Heater Tank (gal)	10	10	10	10	10

Liquid Weight Reference: Water (gal) = (8.3 lbs/3.8 kgs) Fuel (gal) = (6.1 lbs/2.8 kgs) LPG (gal) = (4.2 lbs/1.9 kgs)

Metric Conversion: Multiply pounds x 0.453 to obtain kilograms. Multiply gallons x 3.785 to obtain liters.

CHASSIS

Model: Workhorse™ Chassis W22/W24	Transmission: 5-Speed Automatic w/Overdrive – Allison® 1000 Series
Engine: 8.1L Vortec	Alternator Amps: 145 Amp
Torque: 455 lb.-ft. @ 3200 RPM	Horsepower: 340 HP

- GVWR (Gross Vehicle Weight Rating): Means the maximum permissible loaded weight of the motor home. The GVWR is equal to or greater than the sum of the unloaded vehicle weight plus the net carrying capacity.
- GAWR (Gross Axle Weight Rating): Means the maximum permissible loaded weight a specific axle is designed to carry.
- Base Weight: Means the estimated weight of the motor home without fuel, options, water, cargo or passengers.
- GCWR (Gross Combined Weight Rating): Means the value specified by the motor home manufacturer as the maximum allowable loaded weight of this motor home with its towed vehicle. Towing and braking capacities may differ. Refer to Fleetwood and chassis manufacturer manuals for complete information.
- Length taken from front bumper to rear bumper (excludes accessories).
- Excludes safety equipment and awnings.
- Tank Manufacturer's listed water capacity (WC). Actual LPG capacity is 80% of water listing as required by the safety code.

† Only if standard.

* The chassis manufacturer recommends the installation of a supplemental brake control system to activate the brakes on the vehicle or trailer you are towing.

N/A = Not Applicable

IMPORTANT — PLEASE READ: Product information, photography and illustrations included in this publication were as accurate as possible at the time of printing. For further product information and changes, please visit our website at www.fleetwoodrv.com or contact your local Fleetwood dealer. Prices, materials, design and specifications are subject to change without notice. All weights, fuel, liquid capacities and dimensions are approximate. Fleetwood has designed its recreational vehicles to provide a variety of uses for its customers. Each vehicle features optimal seating, sleeping, storage and fluid capacities. The user is responsible for selecting the proper combination of loads (i.e. occupants, equipment, fluids, cargo, etc.) to ensure that the vehicle's capacities are not exceeded.

What Drives You?

Maybe it's feeling like you're the only one on Earth. Perhaps it's the unique sense of closeness with the great outdoors.

Or, it might be the joy that comes from spending quality time with family and friends. Whatever the reason, we know

that you have a strong drive to experience everything that comes with spending time on the road. And for more than

50 years, we've shared that passion with you. Because we're RV enthusiasts ourselves, you can see our passion in the

vehicles we design and build. Own a Fleetwood, and you'll feel like you're not just traveling, but embarking on an experience

unlike any other. Set your own course for adventure and get out there and explore the world around you. Once you

do, you'll see what it is that drives us — it's you.

RV OWNERCARE* is a limited one-year/15,000-mile and three-year/50,000-mile structural warranty, whichever occurs first, and it is fully transferable for the first 12 months. RV OWNERCARE is one of the RV industry's most comprehensive programs and includes systems, appliances, components and construction, with no deductible and no service charge. RV OWNERCARE coverage is provided from a company that will be around in the future to service your needs. See your nearest Fleetwood dealer for a full explanation of benefits and restrictions.

CLUB FLEETWOOD As a Fleetwood owner, you're eligible to become a member of our owners' group, Club Fleetwood. It's a perfect way to meet other Fleetwood owners who love to travel to beautiful resorts and vacation spots all across America. Call (877) 577-2560 and join the fun! Or visit www.fleetwood.com/clubs to learn more.

FLEETWOODRV.COM To locate a dealer near you, visit our website or call 1-800-444-4905. We can also be contacted at Fleetwood Customer Relations, P.O. Box 7638, Riverside, CA 92513-7638.

IMPORTANT—PLEASE READ Product information, photography and illustrations included in this publication were as accurate as possible at the time of printing. For further product information and changes, please visit our website at www.fleetwoodrv.com or contact your local Fleetwood dealer. Prices, materials, design and specifications are subject to change without notice. All weights, fuel, liquid capacities and dimensions are approximate. Fleetwood has designed its recreational vehicles to provide a variety of uses for customers. Each vehicle features optimal seating, sleeping, storage and fluid capacities. The user is responsible for selecting the proper combination of loads (i.e. occupants, equipment, fluids, cargo, etc.) to ensure that the vehicle's capacities are not exceeded.

Your local Fleetwood dealer is:



www.fleetwoodrv.com

*For complete info see your Fleetwood dealer. © 2004. Fleetwood Enterprises, Inc.
Printed in the USA. Inventory control number PA05F2 10/04.

