

THE ALL NEW 2002 PACE ARROW



OVER THE YEARS, PACE ARROW HAS ENJOYED AN IMPECCABLE REPUTATION AS ONE OF FLEETWOOD'S MOST SOUGHT AFTER LUXURY MOTOR HOMES. TODAY YOU'LL FIND A NEW BEGINNING, A NEW COMMITMENT, A NEW LEVEL OF SOPHISTICATION AND ELEGANCE THAT ASSURES ITS PLACE AS ONE OF THE INDUSTRY'S TOP GAS POWERED COACHES. AND A PROUD EXAMPLE OF OUR INNOVATION, QUALITY AND DESIRE TO PROVIDE YOU WITH THE VERY BEST. PACE ARROW...TOUCHING THE SENSES.

Today you have another chance.

To discover a new place.

To walk a new path. To experience a new beginning.

Today you have another chance

to make tomorrow's dreams come true.



The restyled rear cap is an example of the incredible attention to design and detail you'll find throughout the 2002 Pace Arrow.

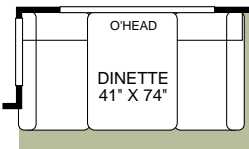
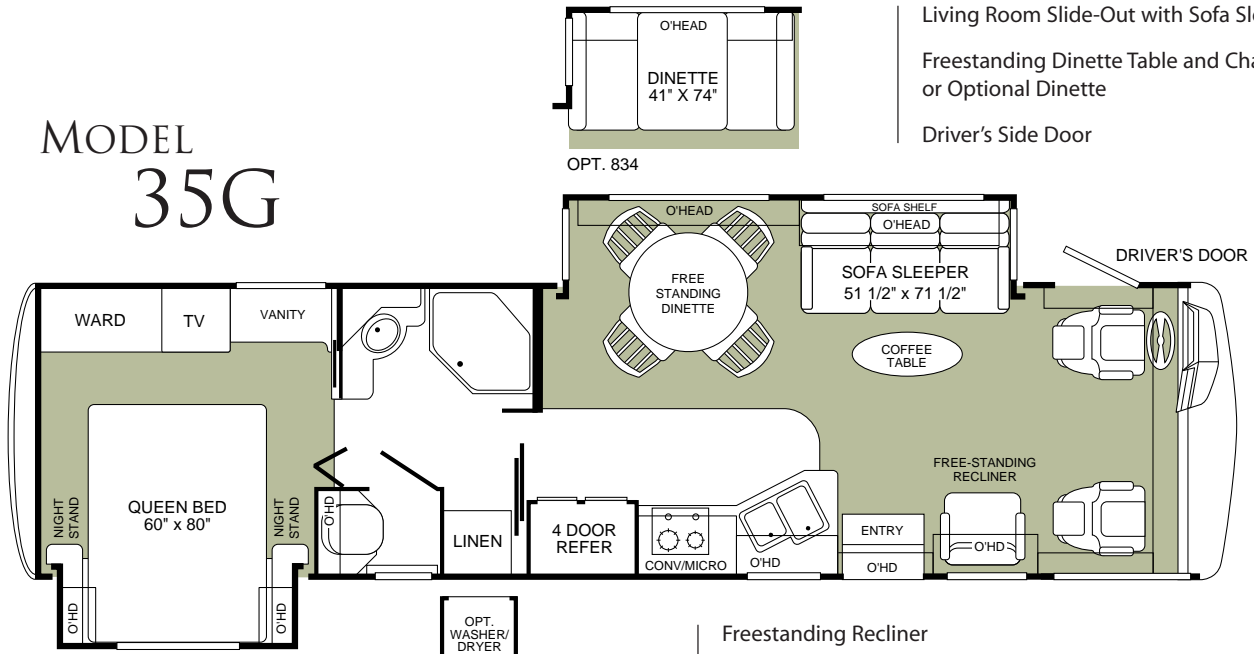
Everywhere you look, you'll see the results of our effort to impress your senses. Starting with a fresh perspective and a vision of the future in motor home travel, no detail has been overlooked. Underneath you is the industry's best chassis and powerplant options, the foundation for our extremely stable, solid and reliable Power Platform. On top of that is a coach that offers you the finest amenities and luxuries as standard equipment. From its expansive slide-out floor plans, incredible galley, beautiful, rich handcrafted cabinetry and sophisticated decors, to details no other manufacturer offers, the 2002 Pace Arrow is truly a work of art and result of our commitment to stir your passion for travel and luxury as well. Enjoy.

Pace Arrow[®]

FLEETWOOD RV
The World's #1 RV Manufacturer

2002 PACE ARROW FLOOR PLANS

MODEL 35G



OPT. 834

Living Room Slide-Out with Sofa Sleeper
Freestanding Dinette Table and Chairs
or Optional Dinette
Driver's Side Door

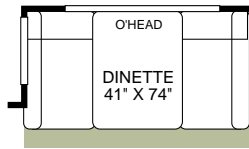
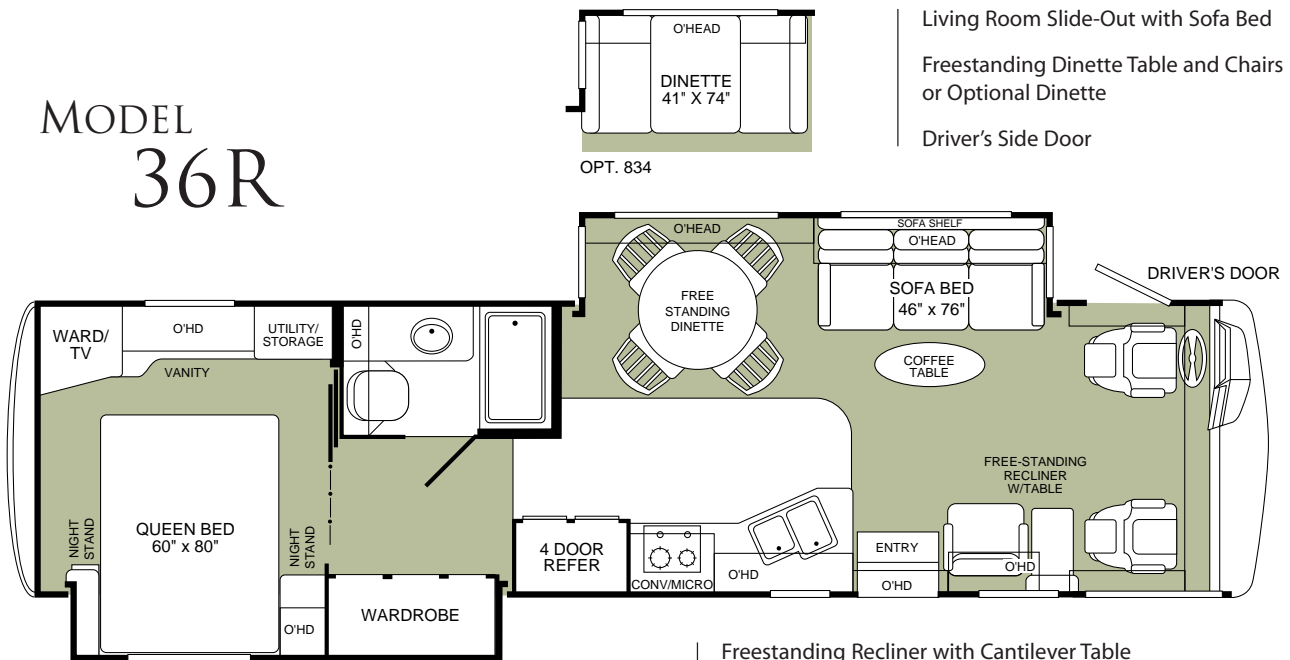
Bedroom Slide-Out with
Queen Bed and Dual Nightstands
Integrated Vanity
Split Bathroom with Private Toilet



OPT. 126

Freestanding Recliner
Norcold® Four-Door Refrigerator
Optional Washer/Dryer

MODEL 36R



OPT. 834

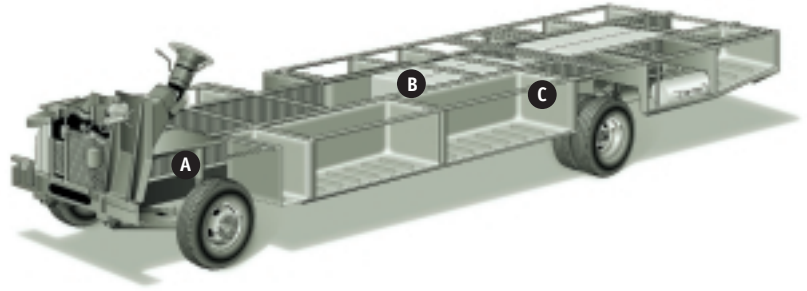
Living Room Slide-Out with Sofa Bed
Freestanding Dinette Table and Chairs
or Optional Dinette
Driver's Side Door

Bedroom/Wardrobe Slide-Out with
Queen Bed and Dual Nightstands
Bedroom Features Cabinets with
Integrated Vanity
Fully Enclosed Bathroom

Freestanding Recliner with Cantilever Table
Norcold® Four-Door Refrigerator

THE POWER PLATFORM MAKES THE DIFFERENCE

Pace Arrow's quality begins long before the features come on board. We begin by building on our exclusive Power Platform, with Paco® Beam, a unique truss design welded together using tubular steel that's durable, strong and dependable. The result is a quiet and nearly flawless ride, strong floor and plenty of storage space below. An all-steel foundation further reduces stress loads on the sidewalls and minimizes chassis flex on uneven roads.



A Steel I-beams are welded the length of the chassis for enormous weight-bearing ability.

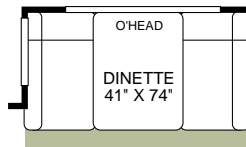
B Water tanks run horizontally down the center of the frame for balance.

C Beefy steel outriggers firmly cradle all exterior compartments.

Drawing for illustrative purpose only to highlight aspects of motor home construction. Actual motor home design depends on model and is subject to change.

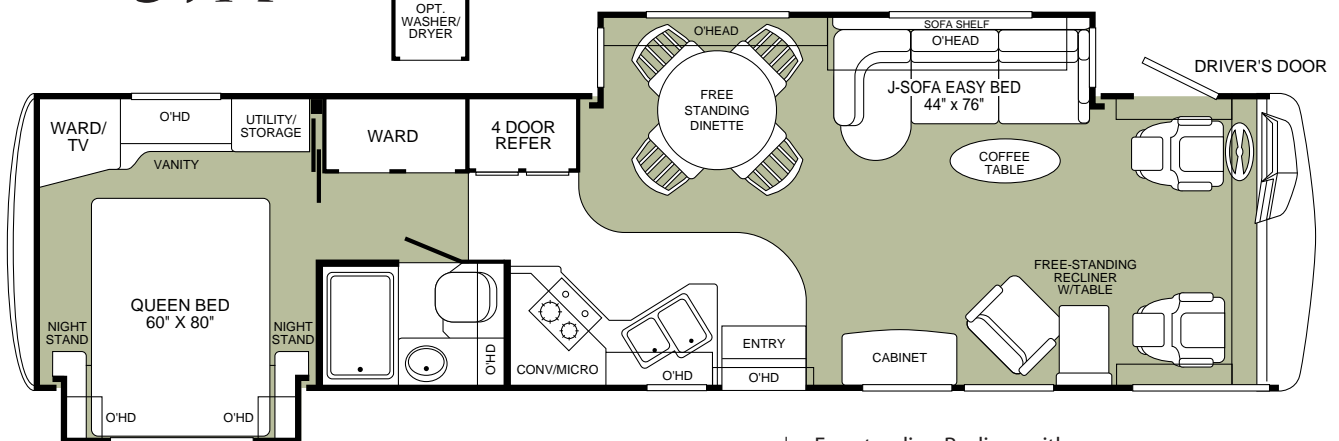
MODEL 37A

Living Room Slide-Out with J-Lounge Sofa and Coffee Table
 Freestanding Dinette Table and Chairs or Optional Dinette
 Driver's Side Door



OPT. 834

OPT. 126



Bedroom Slide-Out with Queen Bed and Dual Nightstands
 Bedroom Features Cabinets with Integrated Vanity
 Fully Enclosed Bathroom
 Optional Washer/Dryer

Freestanding Recliner with Cantilever Table
 Norcold® Four-Door Refrigerator
 Occasional Table/Wine Cabinet

2002 PACE ARROW STANDARD FEATURES

APPLIANCES

- Panasonic® Home Theater Entertainment System, 5-Disc CD and DVD with Surround Sound
- Panasonic® 27" TV in Front Overhead
- Panasonic® 20" TV in Bedroom
- Hi-Fi VCR
- DSS Manual Lift Satellite Dish
- TV Antenna
- Panasonic® CD/Clock Radio in Bedroom
- Seaward® Black Glass 2-Burner Cooktop with Electronic Ignition and Sealed Burners
- GE® Convection Oven, Stainless, 1.4 cu. ft. Capacity with Built-in Rangehood and Light**
- Norcold® 4-Door Refrigerator with Alum-A-Steel Decorative Door Inserts
- Dual Roof A/C High Efficiency with Battery Trickle Charge Solar Panel and Front Chill Grille
- Convenience Appliances: Coffeemaker, DustBuster®, and Spotlight
- 10-Gallon, Quick-Recovery Water Heater with D.S.I. (Gas/Electric)
- 2 Fan-Tastic® Power Roof Vents—Galley and Lavy
- Telephone Jack in Dash, Dinette and Bedroom
- Sealand® All Porcelain Toilet with Water Saver
- Aquatec® Variable Pressure High Output Water Pump with Filter**
- Single-Lever Galley Faucet, Metal Chromed with Pull Out Spray
- Water Filter with Faucet in Galley
- Soap Dispenser in Galley
- Toilet Tank San-T-Flush™ System
- Water Heater Bypass System
- Detectors/Alarms for Smoke, LPG, and CO
- Fire Extinguisher

BODY STRUCTURE

- Power Platform Construction, Longitudinal I-Beams with Steel Outriggers
- Vacubond Walls with VetroLite Composite, Smooth, High-Gloss Exterior Fiberglass, No Wood Substrate
- Vacubond Upper/Lower Floors
- Interlocking Aluminum Extrusions, Floor to Walls and Walls to Ceiling
- Aluminum Wall/Ceiling Framing
- Radius Roof with Ducted A/C—Flat Interior Ceiling
- Royal Tuff-Ply™ Roof

ELECTRICAL

- 5.5kW Onan® Quiet Generator
- Centralized Monitor Panel with Liquid Levels, Battery Condition, Climate Control, Slide-Out Controls and Battery Disconnects
- 120V/12V AC/DC Converter Central Electrical Panel
- Dual 6V/Deep-Cycle 218-amp House Batteries
- 30-amp Service
- Dual Patio Receptacles
- 120V/12V Wire Raceways
- 3-Way Water Pump Switch
- Wall Switches
- Automotive Wire Harnesses

EXTERIOR

- 4-Point Manual Hydraulic Leveler System
- Patio Awning**
- Slide-Out Covers**
- Large, Heated Remote Rear View Mirrors with Turn Signal Indicator
- Double Kwikkee® Power Entry Step with Light
- 2 Graphic Colorways to Match Decor
- Upper and Lower Body Accent Paint
- Fiberglass Front/Rear Caps
- Molded Front Quarter Panels and Rear Wheel Well Trims
- Flush Mounted Furnace and Water Heater
- Aerodynamic Styling
- Stainless Steel Mesh Front Grille
- Awning Rail/Drip Molding (Both Sides)
- Swing-Down Engine Access Door
- Entry Door with Deadbolt Latch
- Doors Keyed Alike
- Utility Compartment with Exterior Shower
- 20' Sewer Hose, 25' Coiled Water Hose
- Roof Ladder
- Exterior Illuminated Acrylic Assist Handle**
- Dual Battery Charge Control
- Park Cable Receptacle
- Accessory LPG Supply with Hose**
- Porch Light

PLATFORM CONSTRUCTION

- Basement Floor Configuration
- Heated Water & Holding Tank Compartments
- Paco® Beam
- Steel Outriggers
- Coach Vibration Isolators

EXTERIOR AUTOMOTIVE

- Large, Curved Aerodynamic Windshield (Extendable Windshield Scrubber Included)
- Undercoating
- Stainless Steel Wheel Simulators
- Spare Tire
- Mud Flaps
- Underhood Utility Light
- Steel Surface on Bulkhead
- 5,000 lb. Trailer Hitch with 7-Point Electrical Hook-Up*
- Dual Halogen Headlights Surrounded by Molded Bezels
- Composite Wrap-Around Euro Design Taillights
- Rear Vision Camera with One-Way Audio
- Denso Single Motor Windshield Wipers with Wet Arm

EXTERIOR STORAGE

- Insulated Smooth Aluminum Skin Luggage Doors
- Molded Polyethylene Storage Compartments
- Single Paddle/Latches
- Continuous One-Piece Compartment Bulb Seal
- Gas Strut Door Supports
- Lighted Compartments
- Steel Sealed Frames

INTERIOR

- Flush Floor Living Room Slide-Out
- Flexsteel® Ultraleather™ Furniture, Residential Styling with Throw Pillows
- Morbern® Vinyl Ceiling, Cushioned
- Fabrica Nylon Carpet with Pad
- Armstrong® Solarian® Vinyl Floor Covering—Galley & Bath
- Freestanding Lounge Reclining Chair with Accessory Pocket and Security Bracket
- Corian® Galley (Including Sink Covers), Lavy, Nightstand and Vanity Countertops
- 3-Point Front Seat Belts
- Roller Guide Drawer Slides with Transit Ship Locks
- Vinyl Pull Shade—Entry
- Bedspread with Deluxe Fabric Headboard
- Restonic® Deluxe Pillow Top Innerspring Mattress
- Wardrobes Include Mirrored Doors, Cedar Lining, Laundry Bag and Wire Storage Shelf (Model Specific)

INTERIOR (CONT.)

- Dual Glazed Slider Windows with Day/Night Shades (Living Area)
- Dual Glazed Torque Windows with Pleated Shades (Bedroom Area)
- Entry Assist Rail (Brushed Chrome)
- Engine Cover Convenience Tray
- Wood Drawers
- Shelf Behind Sofa (Selected Models)
- Radius Corner Cabinetry
- Cantilever Table, Coffee Table and Wine Cabinet (Combinations Vary By Model)
- Freestanding Dinette Table with Four Chairs
- Slide-Out Dinette Bins with Optional Fixed Dinette
- Solid Wood Lavy Door, with Matching Bath Door Trims and Brushed Chrome Metal Knob
- Solid Wood Table Tops for Both Freestanding and Optional Fixed Dinette Selections
- Alder-Stained Drawer Fronts and Raised Panel Cabinet Doors, Arched Designs, Glass and Aluminum Inserts in Selected Locations
- Adjustable Cabinet Shelves (Selected Cabinets)
- Built-In Galley Cutting/Bread Board (Selected Models)
- Ironing Board (Conveniently Slides into Galley, Stores In Wardrobe on Selected Models)
- Solid Divider Doors
- Full and 3/4 Extension Accuride Drawer Slides in Galley
- Brushed Chrome Finish Cabinet Hardware

INTERIOR (CONT.)

- Glass/Aluminum Galley Backsplashes, Rope Lighted
- Sliding Trash Receptacle Under Sink
- Solid Metal Paper Towel Holder
- Spice Rack
- Large, Designer Double Stainless Steel Galley Sink with Metal Strainers
- Skylight in Tub/Shower
- Beveled Mirror in Lavy
- Molded Color Coordinated Acrylic Shower with Bi-Fold Clear Glass Enclosure
- Nickel Finish Bath Accessories and Oval Stainless Sink
- Nickel Finish Metal Designer Lavy Faucet
- Single Lever Shower Control, Nickel Finish, with Slide Adjustable Shower Head and Soap Dish
- Shower Dispenser for Lotion, Shampoo, Soap, Etc.
- 2 Striking Interior Theme Decors

INTERIOR AUTOMOTIVE

- Dual Chrome Electric Horns
- Digital Compass and Outside Temperature Gauge
- Denso Intermittent Wiper Controls
- ICC Switch
- Double-Swivel Sun Visors with Map Pockets
- Driver's Door with Operable Window Lift, and Opera Window Above
- Cruise Control

INTERIOR AUTOMOTIVE (CONT.)

- Low Profile Engine Cover
- Visteon® Double DIN Radio with CD AM/FM/MX—Electronic Tuning & User Friendly Controls
- Tilt Steering Wheel
- Dash Fans
- Tilt-Up Instrument Panel, Carbon Fiber Appearance
- Soft Surface Automotive Dash
- Computer Workstation, Dash Mounted
- Auxiliary Start Circuit
- Battery Disconnect System
- Denso Auto A/C Heater Combo
- Radio Switch—Main/Auxiliary
- Flexsteel® Ultraleather™ Driver/Passenger Captain's Chairs with Reclining Back/Slide Controls and Map and Accessory Pockets

INTERIOR LIGHTING

- Wardrobe Lighting
- Fluorescent Ceiling Lights with Dual Bulbs
- Nickel and Glass Ceiling, Wall, Cosmetic and Reading Decor Lighting
- Incandescent Lighting
- Rope Lighting Over Galley Top

* The chassis manufacturer recommends the installation of a supplemental brake control system to activate the brakes on the vehicle or trailer you are towing.

** CSA standards may require substitution or deletion to achieve conformance.

2002 PACE ARROW OPTIONS

	35G	36R	37A
APPLIANCES			
Washer/Dryer	OPT	N/A	OPT
CSA Package	OPT	OPT	OPT
EXTERIOR AUTOMOTIVE			
Ford® Chassis 6.8L Triton™ V10 Engine	OPT	OPT	OPT
Workhorse® Chassis 8.1L Vortec V8 Engine	OPT	OPT	OPT
INTERIOR			
Fixed Dinette w/Solid Wood Table and Ultraleather™ High Resiliency Foam Cushions	OPT	OPT	OPT
6-Way Adjustable Power Driver Seat	OPT	OPT	OPT
COLOR DECOR/GRAPHICS			
Slate	OPT	OPT	OPT
Sand	OPT	OPT	OPT

IMPORTANT—PLEASE READ: Product information, photography and illustrations included in this publication were as accurate as possible at the time of printing. For further product information and changes, please visit our website at www.fleetwoodrv.com or contact your local Fleetwood dealer. Prices, materials, design and specifications are subject to change without notice. All weights, fuel, liquid capacities and dimensions are approximate. Fleetwood has designed its recreational vehicles to provide a variety of uses for its customers. Each vehicle features optimal seating, sleeping, storage and fluid capacities. The user is responsible for selecting the proper combination of loads (i.e. occupants, equipment, fluids, cargo, etc.) to ensure that the vehicle's capacities are not exceeded.

2002 PACE ARROW SPECIFICATIONS

	35G	36R	37A
FORD® CHASSIS			
Engine LD	6.8L	6.8L	6.8L
Wheelbase	228"	228"	228"
GVWR (lbs) (1)	22,000	22,000	22,000
Front GAWR (lbs) (2)	7,500	7,500	7,500
Rear GAWR (lbs) (2)	14,500	14,500	14,500
Base Weight (lbs) (3)	17,300	17,500	17,700
GCWR (lbs) (4)	26,000	26,000	26,000
Hitch Rating (lbs)*	5,000	5,000	5,000
Tongue Weight (lbs)*	500	500	500
Fuel Capacity (gal)	75	75	75

WORKHORSE® CHASSIS

Engine LD	8.1L	8.1L	8.1L
Wheelbase	228"	228"	228"
GVWR (lbs) (1)	22,000	22,000	22,000
Front GAWR (lbs) (2)	8,000	8,000	8,000
Rear GAWR (lbs) (2)	14,500	14,500	14,500
Base Weight (lbs) (3)	17,800	18,000	18,000
GCWR (lbs) (4)	26,000	26,000	26,000
Hitch Rating Weight (lbs)*	5,000	5,000	5,000
Tongue Weight (lbs)*	500	500	500
Fuel Capacity (gal)	75	75	75

DIMENSIONS AND CAPACITIES

Overall Length (5)	35' 8"	36' 2"	37' 8"
Overall Height (with A/C) (8)	11' 11"	11' 11"	11' 11"
Overall Width (maximum) (6)	102"	102"	102"
Interior Height (maximum)	79"	79"	79"
Interior Width (maximum)	96"	96"	96"
Fresh Water Holding Tank (gal)	100	100	100
Grey Water Holding Tank (gal)	58	58	58
Black Water Holding Tank (gal)	47	42	42
Appliance LPG Tank (gal) (WC) (7)	25	25	25
Water Heater Tank (gal)	10	10	10

LIQUID WEIGHT REFERENCE Water (gal) = (8.3 lbs/3.8 kgs) Fuel (gal) = (6.1 lbs/2.8 kgs) LPG (gal) = (4.5 lbs/2.0 kgs)

METRIC CONVERSION Multiply pounds x 0.453 to obtain kilograms Multiply gallons x 3.785 to obtain liters

1. GVWR (Gross Vehicle Weight Rating): Means the maximum permissible loaded weight of the motor home. The GVWR is equal to or greater than the sum of the unloaded vehicle weight plus the net carrying capacity.
 2. GAWR (Gross Axle Weight Rating): Means the maximum permissible loaded weight a specific axle is designed to carry.
 3. Base Weight: Means the weight of the motor home without fuel, options, water, cargo or passengers.
 4. GCWR (Gross Combined Weight Rating): Means the value specified by the motor home manufacturer as the maximum allowable loaded weight of this motor home with its towed vehicle. Towing and braking capacities may differ. Refer to Fleetwood and chassis manufacturer manuals for complete information.
 5. Overall length measured from forward most body point or bumper to rear most body point or rear bumper. Add 6" for rear ladder.
 6. Excludes safety equipment and awnings.
 7. Tank Manufacturer's listed water capacity (WC). Actual LPG capacity is 80% of water listing as required by the safety code.
 8. Add 4" for Workhorse® chassis.
- * The chassis manufacturer recommends the installation of a supplemental brake control system to activate the brakes on the vehicle or trailer you are towing.

WHY WOULD YOU BUY ANYTHING ELSE?



For every road you travel, Fleetwood has the RV to fit your high standards and lifestyle. We build the recreational vehicles America wants, accounting for nearly one out of every three RVs on the road today. How do we do it? We call it the **Fleetwood Equation**.

Size + Service + Quality = Value!

SIZE *The world's #1 RV manufacturer*

For over a half-century Fleetwood has grown to become the largest manufacturer of recreational vehicles in the world. And stands today as the only RV manufacturer in the *Fortune 500*. You won't find our nearest competitor in even the top 1,000. Fleetwood remains, year after year, the largest, most influential, innovative and recognized leader in the RV industry.

SERVICE *Listening to our customers*

With over 1,100 service dealers in the US and Canada, Fleetwood has the largest network in the RV industry. No other RV company comes close in equaling this vital customer support system. Fleetwood RV service dealers have instant, real-time electronic access to your service records as well as parts inventory and warranty repair authorization inquiries. We also provide a 24-hour customer call center for service and product information so no matter where you travel in North America, professional support and fast answers are always nearby. Call toll free 24 hours a day: **1-800-322-8216**.



QUALITY *Using only the best materials*

At Fleetwood, quality begins at the design stage so every coach is built right, right from the start.



Subsequent to design approval, full-functioning prototypes are built, then punished on a test track and subjected to accelerated life cycle tests where a few weeks can equal years of normal use. At the same time, components and systems are test-cycled thousands of times assuring years of problem-free use.



Once approved for production, each unit is built by skilled technicians using quality materials and components, many of which are sourced through, or manufactured by, our subsidiary companies such as Gold Shield Fiberglass and Continental Lumber Products.



Fleetwood engineers specify the very best products and appliances from companies such as Coleman®, Dometic®, Flexsteel®, Ford®, Freightliner®, Magic Chef®, Panasonic®, and Workhorse®. Companies that are experts in their respective fields and play a significant role as partners, not just suppliers.

All this assures that every Fleetwood RV has the fit, finish and details required by our high standards—as well as yours.

VALUE *Priced right with style*

At Fleetwood RV, we look at value as the sum of everything we offer.

- **Value** is our design, engineering expertise, and innovative manufacturing methods.
- **Value** is structures and components that are the best in the industry, that meet or exceed government and industry safety standards.
- **Value** is Ownercare — a one-year/three-year warranty with coverage from a company that will be around in the future to service your needs. Ownercare is one of the RV industry's most comprehensive programs and includes systems and applications, construction, no deductible and no service charge. And it is fully transferable for the first 12 months. See your nearest Fleetwood dealer for a full explanation of benefits and restrictions.
- **Value** is customer satisfaction. When asked, more experienced RV owners would recommend Fleetwood to a friend than any other brand. Fleetwood RVs consistently hold their value better than most RVs at trade-in time.



Value is peace of mind.

SSQV — Size, Service, Quality, and Value. Together they equate to the very best RV you can buy, and the reason you should purchase a Fleetwood over any other brand.

Require these features when you purchase your next RV... Fleetwood does!

See you on the road!

LIMITED ONE-YEAR/THREE-YEAR WARRANTY

For Motor Homes Manufactured by subsidiaries of Fleetwood Enterprises, Inc., sold in the United States and Canada

COVERAGE PROVIDED

Your new motor home, including the structure, plumbing, heating, electrical systems, all appliances and equipment installed by the manufacturer, is warranted under normal use to be free from manufacturing defects in material or workmanship. Appearance imperfections or damage to paint, graphics, exterior materials, or upholstery that may have occurred prior to delivery are normally corrected during the inspection process at the manufacturing plant or at the dealership.

The warranty extends to the first retail purchaser and his transferee(s) and begins on the date of original retail delivery or the date the motor home is first placed into service as a rental, commercial or demonstrator unit (whichever occurs first). The warranty extends for the following periods:

1. For all defects (other than structural) the warranty extends for a period of one year from such date or until the unit has received 15,000 total miles of use as determined by the mileage shown on the odometer (whichever occurs first).
2. For structural defects, 3 years; structural defects are limited to the following: roof structure, sub-floor structure, exterior walls, interior walls and ceilings.

Written notice of defects must be given to the selling dealer or manufacturer not later than ten (10) days after the expiration of the warranty period.

OWNER'S OBLIGATION

The owner is responsible for normal maintenance as described in the Owner's Information Package; however, minor adjustments (such as cabinet latches, TV antenna control, etc.) will be performed by the dealer during the first 90 days of warranty coverage. Thereafter, such adjustments are the responsibility of the owner as normal maintenance unless required as a direct result of repair or replacement of a defective part under this warranty.

If a problem occurs which the owner believes is covered by this warranty, the owner shall contact the selling dealer, or the Fleetwood Service Center, giving sufficient information to resolve the matter. The owner shall deliver the motor home to the dealer or the Fleetwood Service Center location for warranty service.

DEALER'S OBLIGATION

By agreement with the manufacturer, the dealer is obligated to maintain the motor home prior to retail sale, to perform a detailed predelivery inspection and to repair or replace any parts necessary to correct defects in material or workmanship.

FLEETWOOD RV

The World's #1 RV Manufacturer

Fleetwood Enterprises, Inc. • RV Marketing • P.O. Box 7638 • Riverside, CA 92513-7638

Your local Fleetwood RV dealer is:

WHEN THE DEALER DOES NOT RESOLVE THE PROBLEM

If the dealer is unable or unwilling to resolve a problem which the owner is convinced is covered by the warranty, the owner should contact the Fleetwood Service Center at the address listed below and provide the Fleetwood Service Center with a description in writing of the problem and attempts made to resolve it.

MANUFACTURER'S OBLIGATIONS

Upon receipt of notice of a claim, where the dealer was unable or unwilling to resolve the problem the Fleetwood Service Center will repair or replace any parts necessary to correct defects in material or workmanship or will take other appropriate action as may be required.

WHAT IS NOT COVERED BY THIS WARRANTY

This warranty does not cover:

1. The automotive chassis system (including the chassis and drive train), tires and batteries, which are covered by the separate warranties of the respective manufacturers of these components.
2. Defects caused by or related to:
 - a. Abuse, misuse, negligence or accident;
 - b. Failure to comply with instructions contained in the Owner's Information Package;
 - c. Alteration or modification of the motor home;
 - d. Environmental conditions (salt, hail, chemicals in the atmosphere, etc.)
3. Normal deterioration due to wear or exposure, such as fading of fabrics or drapes, carpet wear, etc.
4. Normal maintenance and service items, such as light bulbs, fuses, wiper blades, lubricants, etc.
5. Motor homes on which the odometer reading has been altered.
6. Transportation to and from dealer or Fleetwood Service Center location, loss of time, inconvenience, commercial loss, loss of use, towing charges, bus fares, vehicle rental, incidental charges such as telephone calls, or hotel bills, or other incidental or consequential damages.

Some states do not allow the exclusion of limitation of incidental or consequential damages, so the above limitation exclusion may not apply to you.

This warranty gives you specific legal rights, and you may also have other rights, which vary from state to state.

The manufacturer is not responsible for any undertaking, representation or warranty made by any dealer or other person beyond those expressly set forth in this warranty.

www.fleetwoodrv.com

Visit our website to find a dealer near you or learn more about other Fleetwood products. Or call 1-800-444-4905.

FOR CUSTOMER ASSISTANCE, call toll free 24 hours a day at 1-800-322-8216, visit our website, or you may write to Fleetwood Enterprises, Inc., P.O. Box 7638, Riverside, CA 92513-7638.

IMPORTANT—PLEASE READ: Product information, photography and illustrations included in this publication were as accurate as possible at the time of printing. For further product information and changes, please visit our website at www.fleetwoodrv.com or contact your local Fleetwood dealer. Prices, materials, design and specifications are subject to change without notice. All weights, fuel, liquid capacities and dimensions are approximate. Fleetwood has designed its recreational vehicles to provide a variety of uses for its customers. Each vehicle features optimal seating, sleeping, storage and fluid capacities. The user is responsible for selecting the proper combination of loads (i.e. occupants, equipment, fluids, cargo, etc.) to ensure that the vehicle's capacities are not exceeded.